



# WELCOME TO THE CATZ INC March Show



## 5 RING CAT SHOW

Hosted and Licensed by CATZ Inc,

Sunday 26<sup>th</sup> March 2023

Kumeu Community Centre  
35 Access Road  
Kumeu, Auckland

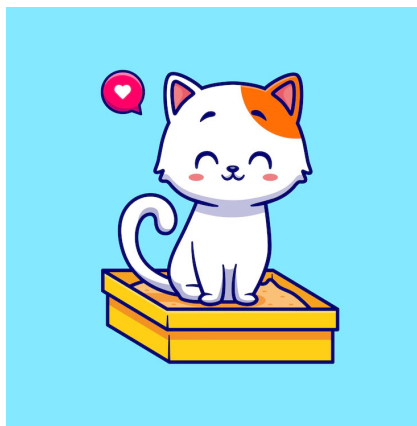
# JUDGES

## Judging Ring 1



Rings 1 and 2 double specialty and all breeds  
**David Crymble (ANCATS) All Exhibits**

## Judging Ring 2



Rings 3 and 4 double specialty and all breeds  
**Debbie Davidson (CATZ Inc.) All Exhibits**

## Judging Ring 3



Ring 5 specialty  
**Fiona Maclean (CATZ Inc.) All Longhairs**  
**Sandi Mackay (CATZ Inc.) All Shorthairs**

**ENTRY FEES, CONTACTS, & SHOW TIMETABLE:**

**ENTRY CLERK:** Kim Dunnet-Smith

**Email:** [Showentry@maccats.co.nz](mailto:Showentry@maccats.co.nz)

**Phone:** 021546911

**Entries Close: Email** received before Friday 17<sup>th</sup> March 2023

**SHOW TIMETABLE:**

<b>BENCHING:</b>	8:00 am to 8:30 am
<b>IN-CAGE VETTING:</b>	8:30 am to 9.00 am
<b>JUDGING BEGINS:</b>	9.00 am.
<b>SHOW CLOSES:</b>	When announced after the completion of judging and the tables are away.

**FEES:**

<b>ENTRY FEE</b>	\$40.00 per entry
<b>PRELIMINARY NB</b>	\$5.00
<b>BENCHING</b>	\$5.00 per exhibitor - Pay only once on first entry
<b>CAGE HIRE</b>	\$5.00 per cage
<b>CATALOGUE</b>	\$5.00 prepaid
<b>EXTRA SPACE</b>	\$5.00 additional cage space

\*\*\*\*\*

**KITTENS must be born on or before 18<sup>th</sup> December 2022 to be eligible for entry.**  
**Please remember to bring Kitten Vaccination Certificates**  
**If you are bringing Cats or Kittens for sale then you must notify the Entry Clerk.**

**\*Companion Cat (Domestic) Entry Assistance:**

**Note: Companion cats compete in two separate Show Categories.**

**Some known, or Part pedigree or Unregistered Pedigree Pets must be entered in the Household Pet (HHP) section.**  
**Companion cats which compete in the Domestic Companions category must be fully domestic with no evidence of hybridization.**

**ASSISTANCE** is readily available to all owners of Companion Cats, to correctly define or classify the colour or pattern of their cat for this Show. If you are unsure whether your cat is LONGHAIR or SHORThAIR and/or a SOLID, TABBY, SMOKE, BI-COLOUR, SILVER, POINTED or any COMBINATION of these, you may contact any of the following for assistance:

**Sandi Mackay (09)483 3032**

**WE NEED YOUR HELP**

**Assistance is required at this show, in the form of Clerking and Cage cleaning.**

---

**PLEASE READ THE SHOW RULES AVAILABLE ON THE WEBSITE**

**Please note you must clear any money owed to Catz Inc or clubs before entering show.**

**Currently we do not have catering at this show**

**We are short on volunteers so work on the catalogue may be carried out in the same household as a judge, and a judge may be clerking for another Judge with edited catalogues. If you have a problem with this do not enter the show as no refunds will be given and no complaints will be accepted.**